

## FEATURED PROPERTY

U.S. 301 Highway & Gateway Drive  
Dunn, NC 28334



# Edgerton Industrial Park



## ABOUT EDGERTON INDUSTRIAL PARK

Edgerton Industrial Park offers an ideal location for industrial users seeking prime interstate access. Situated less than a mile from Interstate 95 at Exit 71 and along U.S. 301 South, the Park is just over 10 minutes from the I-95/I-40 interchange. Its strategic location offers easy access to Raleigh, Fayetteville, and Raleigh-Durham International Airport, all within an hour's drive.

Clearing and grading of Site 1 is underway and should be completed by June 30, 2025, with Site 2 scheduled for completion in Q3 2025.

## SITE CHARACTERISTICS

Site 1: 25 acres  
Buildable: 16.5 acres

Site 2: 20 acres  
Buildable: 12.8 acres

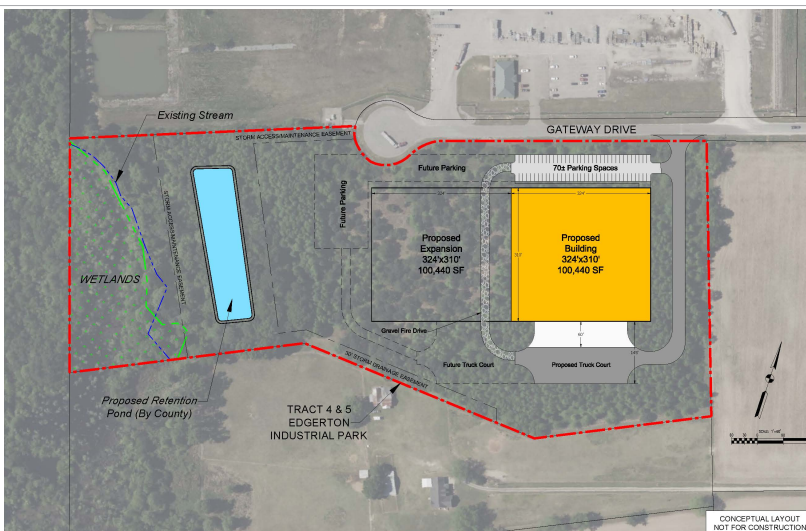
## PROXIMITY

1.5 miles: I-95  
12 miles: I-95/I-40 interchange  
55 miles: Raleigh-Durham International  
93 miles: Port of Wilmington

## SITE UTILITIES

Power: Duke Energy  
Gas: Piedmont Natural Gas  
Water/Sewer: City of Dunn  
Fiber: Brightspeed

For a listing of all featured properties:



## CONTACT US



**STEPHEN BARRINGTON**  
Director, Harnett County Economic Development  
sbarrington@harnett.org | (910) 814-6891



**ANGIE STEWART**  
Senior Economic Developer  
astewart@harnett.org | (910) 814-6893